



# CHRIST CHURCH CATHEDRAL

900 Broadway Nashville, Tennessee 37203 | P. 615 255 7729 | F. 615 313 7090 | christcathedral.org

NOVEMBER 2012 Volume 70, Issue 70

## For the All Saints' Octave

The 1979 Book of Common Prayer indicates that All Saints' Day and the Sunday after All Saints' Day number among the great festivals whereon baptisms may be administered and celebrated. In essence, the very feast day itself has a foundational baptismal character, affirming the solidarity of the baptized in Christ, and the common hope for salvation. The following is a previously unpublished Charles Wesley hymn text on Baptism, that the Charles Wesley Society commissioned Dean Kimbrough to set to music earlier in the year.

The setting and text were sung for the first time last month at the annual meeting of the International Charles Wesley Society when they met in the Upper Room Chapel on the Scaritt-Bennett campus here in Nashville.

CORNERSTONE

1. Come Fa - ther, Son, and Ho - ly Ghost, re -  
 2. Now in your own ap - point - ed hour, your  
 3. For these your ran - somed ones we claim the  
 4. In - to your fold this mo - ment take, true

3  
 vealed in the bap - tis - mal flood, joint Sa - vior of all  
 own ap - point - ed means, ap - pear, that all may tremble  
 grace which glo - rious life im - parts, their souls bap - tize in -  
 wit - ness of their sins for - given and part - ners of your

8  
 sin - ners lost, des - cend, the one e - ter - nal God.  
 at your pow'r, and own the Tri - une God is here.  
 to your name, and stamp your im - age on their hearts.  
 na - ture make, and part - ners of your throne in heaven.

# PASTORAL CARE

## HOSPITAL ADMISSIONS

Please contact the clergy directly or Peggy Tucker in the church office at 615.255.7729 whenever you or a loved one are admitted to the hospital. The clergy would like to visit and offer prayers. The hospital admission clerk may ask specific questions about your religious preference, your denomination and your church, but they will not notify the Cathedral to let us know you are there. Governmental regulations (HIPAA) prohibit release of health information to third parties so we must rely upon you to let us know to which hospital you or a member of the parish has been admitted.

## ON CALL

A member of the clergy is always on call for any emergency that may arise. Please call the church office at 615.255.7729 and a member of the clergy will be in touch with you.

## ARE YOU EXPECTING A CHILD?

The birth or adoption of a child is an amazing time in the life of a family and in the life of a parish. We want to know when your family is expecting/adopting a child so that members of the clergy can reach out to you. Please contact The Reverend Canon Gene Manning at 615.255.7729 so that we can welcome your new baby into the community.

## PRAYER LISTS

There are two different prayer lists at the Cathedral: the Sunday prayer list and the weekday Chapel prayer list. You may add names to one or both lists at any time if the person you wish to add has given you permission to do so. Please contact a member of the clergy or Peggy Tucker at 615.255.7729 to submit a name to the lists. Those on the Sunday prayer list are prayed for during the Prayers of the People and the names are printed in the Sunday Order of Worship. Individuals on the weekday prayer list are prayed for at the 12:15 p.m. daily Eucharist.

Unless otherwise indicated, we will pray for each person three consecutive weeks. The person placing the name on the list must contact the church office 615.255.7729, if the name should remain on the list for an additional three weeks.

## Eucharistic Visitor Ministry

*We who are many are One Body, because we share one bread, one cup.*

From time to time fellow parishioners are unable to attend the Sunday celebration of the Holy Eucharist due to illness, hospitalization or infirmity. Eucharistic Visitors are licensed and authorized by the Bishop to take the Consecrated Elements to such persons. In October we will begin sending Eucharistic visitors from the Sunday liturgies to those who wish to receive the sacrament. Please contact The Reverend Canon Gene B. Manning, gmanning@christcathedral.org or 615.255.7729, if you, your family member or a fellow parishioner desires such a visit. A visit by a Eucharistic Minister does not take the place of a pastoral call by one of the clergy.



## Worship Schedule

### Sundays

Holy Eucharist – 7:00 a.m., 8:30 a.m. and 11:00 a.m.  
Morning Prayer – 10:20-10:35 a.m.

### Monday-Friday

Morning Prayer – 8:30 a.m.  
Holy Eucharist – 12:15 p.m.

### Wednesday

Evening Prayer – 5:15 p.m.

### Centering Prayer

Sunday – 9:45-10:45 a.m.  
Tuesday – 5:30 p.m.  
Thursday – 12:15 p.m.

### First Friday Liturgy

Every first Friday of the month at 6:00 p.m.  
November 2

### Taizé

Every second Sunday of the month at 6:00 p.m.  
November 11 (**There will be No Taizé in December**)



To make your 2013 pledge online go to [christcathedral.org/give](http://christcathedral.org/give)

## Transitions

*Thank you, Lord, for all the blessings of this life.*

Baptisms on the Sunday after All Saints' Day, November 4, 2012:

**Carolyn Key Raney & Aaron Alexander Raney**, daughter and son of Natalie Dickson and Aaron Raney  
**Elizabeth Ford Douglas**, daughter of Jessica and Kevin Douglas  
**Anne Patton Atkinson**, daughter of Anabel and Cameron Atkinson  
**Stuart Truslow Shafer**, son of Chloe and Judson Shafer  
**Andrew Joshua Mixon**, son Amanda and Christopher Mixon  
**Hasslock Hill Dyer**, son of Janet and Michael Dyer; and  
**Thomas Edward Howell McGuire**, son of Jennifer and Josh McGuire

We give thanks for the birth of **Thomas Fite Paine IV**, son of Carter and Kristen Paine, grandson of Ophelia and George Paine.

We ask your prayers for the departed: **Roy O Elam, Jr.**, father of Roy and Bob Elam; **Carol Benzion**, mother of Jeff Lobelson and grandmother of Grace, Faith and Rose Lobelson; **Sarah Hamilton Sell (Sally)**; **Wilma Sadler**, grandmother of Kristen Simmons and Jason Edwards; **David Tyree**, friend of Donna Clark; **Ann O Hopton**; **Jane Bell**; **John & Sarah Wheat**; **Jeanne Bodfish**; **Anne Cazort Hardy**, mother of Jane Hardy; **Sandy Bloch**; **Bertha Spencer Ringland**, mother of Margaret Cameron; and **Anita Nelson**, friend of John Bridges.

We welcome those who have transferred their membership to Christ Church Cathedral: **Susan Katinka Tidwell**, St. Paul's, Franklin, Tennessee.

# CHRISTIAN EDUCATION

## Bible Challenge Readings for November

We are ready to begin! As we undertake this transforming discipline of reading the Word of God over the next year, there are a few things to consider.

- The readings for the month of November are listed below and can also be found on our website.
- Give yourself a full year to read the entire Bible. The Bible has a profound message, and you need to give yourself ample time to allow God's Word to penetrate your heart, mind and soul deeply.
- The following translations are suggested: The New Oxford Annotated Version, The New International Version, and the Common English Version. But there are many other fine translations you may wish to use.
- Many may want to read their Bible using their iPad, iPhone, Kindle or Nook or listen to the Bible on CD's.

### Week of November 5

Day 36 – Exodus 40; Psalm 30; Mark 3  
Day 37 – Leviticus 1-3; Psalm 31; Mark 4  
Day 38 – Leviticus 4-6; Psalm 32; Mark 5  
Day 39 – Leviticus 7-9; Psalm 33; Mark 6  
Day 40 – Leviticus 10-12; Psalm 34; Mark 7  
Day 41 – Leviticus 13-15; Psalm 35; Matthew 8  
Day 42 – Enjoy hearing the Scriptures read aloud in church

### Week of November 12

Day 43 – Leviticus 16-18; Psalm 36; Mark 9  
Day 44 – Leviticus 19-21; Psalm 37:1-18; Mark 10  
Day 45 – Leviticus 22-24; Psalm 37:19-42; Mark 11  
Day 46 – Leviticus 25-27; Psalm 38; Mark 12  
Day 47 – Catch up; Psalm 39; Mark 13  
Day 48 – Numbers 1-3; Psalm 40; Mark 14  
Day 49 – Enjoy hearing the Scriptures read aloud in church

### Week of November 19

Day 50 – Numbers 4-5; Psalm 41; Mark 15  
Day 51 – Numbers 6-8; Psalm 42; Mark 16  
Day 52 – Numbers 9-11; Psalm 43; Luke 1  
Day 53 – Numbers 12-14; Psalm 44; Luke 2  
Day 54 – Numbers 15-17; Psalm 45; Luke 3  
Day 55 – Numbers 18-20; Psalm 46; Luke 4  
Day 56 – Enjoy hearing the Scriptures read aloud in church

### Week of November 26

Day 57 – Numbers 21-23; Psalm 47; Luke 5  
Day 58 – Numbers 24-26; Psalm 48; Luke 6  
Day 59 – Numbers 27-29; Psalm 49; Luke 7  
Day 60 – Numbers 30-32; Psalm 50; Luke 8  
Day 61 – Numbers 33-35; Psalm 51; Luke 9  
Day 62 – Numbers 36; Psalm 52; Luke 10  
Day 63 – Enjoy hearing the Scriptures read aloud in church

Follow us: [christcathedral.org](http://christcathedral.org)  
[facebook.com/christcathedralnashville](https://www.facebook.com/christcathedralnashville)  
[twitter.com/christcathedral](https://twitter.com/christcathedral)  
[info@christcathedral.org](mailto:info@christcathedral.org)

## Church School Topics

### Adults' Classes:

#### The Sunday Forum

**November 4, *Benedictus qui Venit*** : Transubstantiation, Real Presence, Memorial? Why it Matters.

Led by the Very Rev. Timothy Kimbrough (Parish Hall)

**November 11, *Verbi Christi***

Led by the Very Rev. Timothy Kimbrough (Parish Hall)

**November 18, TBA**

Led by the Rev. Dr. Ben King (Parish Hall)

**November 25 Anamnesis**

Led by the Very Rev. Timothy Kimbrough (Parish Hall)

#### Bible Readings (The Bible Challenge)

Led by the Rev. Canon Gene Manning (Wheeler Room)

#### Centering Prayer

*Tools Matter for Practicing the Spiritual Life*, by Mary Margaret Funk

**November 4**, Led by Arlene Wilson (Chapel)

**November 11**, Led by Peter Saama (Chapel)

**November 18**, Led by Jean Jackson Hastings (Chapel)

**November 25**, Led by Heather Rippetoe (Chapel)

#### Faith and Family Matters

**November 4** Being Consumed: A Discussion

Led by the Reverend Joshua Caler (810 Broadway Bldg.)

**November 11**, What is a Successful Christian?

(810 Broadway Bldg.)

**November 18 & 25**, No Classes

### Children's Classes:

#### Catechesis of the Good Shepherd:

Age 3, 4's and Pre-K 5's, 1st, 2nd and 3rd Grades- Cheek Hall, Kindergarten, 4th, 5th and 6th Grades- Cathedral Annex Building

### Youth Classes:

7th-12th grades (810 Broadway Bldg.)

## Cathedral Flowers

The beautiful flowers you see in the Cathedral every Sunday are placed to the glory of God and often in thanksgiving or memory of a loved one. They also express the generosity of those who contribute to our Flower Fund. Cost: \$150. To give flowers on an upcoming Sunday, contact Peggy Tucker in the Cathedral office at 615.255.7729 or [ptucker@christcathedral.org](mailto:ptucker@christcathedral.org).





## JOURNEY IN FAITH

Wednesday Evenings  
Cathedral Annex Building  
6:00 p.m.

*An Evening for All Newcomers and Inquirers*

Are you interested in baptism, confirmation or simply learning more about being a Christian in the Episcopal Church? Are you coming to Christ Church Cathedral from another tradition or from another Episcopal Church? Journey in Faith is for you!

**Call to reserve your place, 615.255.7729.**

## WEDNESDAY EVENINGS AT THE CATHEDRAL Pastoral Conversations

Please join these important conversations as we seek to have the faith inform some of the most difficult aspects of our lives and the lives of our loved ones.



**November 7**

**Dr. Jamie Kyne, Clinical Psychologist**

*"Perspectives on Mood: A Theological Consideration for the Management of Anxiety"*

**November 28**

**The Reverend Paul Pradit, Chief Clinical Officer and Director of Pastoral Care Services, Cumberland Heights**

*"Faith and Addiction"*

**January 16**

**Cynthia Ezell, Marriage and Family Therapist**

*"Mistakes as Fertile Ground—the Four Gifts of Fallibility"*

**January 30**

**Dr. Ben Curtis, School of Religion, Belmont University, the Reverend Lyonel Gilmer, St. Thomas/Nashville Clinical Pastoral Partnership, and Martin Shofner, Partner, Shofner Buck Architects**

*"Words of Faith for Spiritual Dialogue"*

**April 3 and 10**

**The Reverend Dr. Bruce Rogers Vaughn, Assistant Professor of the Practice of Pastoral Theology and Counseling, Vanderbilt Divinity School**

*"Capitalism Making Us Sick, Selfish, and Anti-Religious? Economics, Politics, and the Care of the Soul"*



Program will be from 6:00 to 7:30 p.m.

Dinner will be served at 5:30 p.m. Cost of the dinner is \$5 for adults and \$3 for children. Childcare is provided. Please call Marti Lawson at 615.255.7729 for dinner reservations.

**Dinner reservations are required by 4 p.m. on Monday each week.**

## Sacred Space for the City FALL SYMPOSIUM

**The Role of the Laity: From New Testament Times to the Episcopal Church Today**

Featuring

**THE REVEREND DR. BENJAMIN J. KING**



What is the role of the laity in our churches? In the Catholic Church of the Victorian era, one English Monsignor notoriously answered: "To hunt, to shoot, to entertain. These matters they understand, but to meddle with ecclesiastical matters they have no right at all." In a study prepared for the recent General Convention, a different answer was given: "The Episcopal

Church has historically embraced and legitimized laity, bishops and clergy equally to take their place in the governance of the church." Dr. Benjamin J. King's lectures will examine the various roles of the laity since New Testament times so that we might better understand what the role of the laity could be today.

**Friday, November 16, 2012**

Reception: 5:15 p.m.; Dinner: 5:45 p.m.; and  
Lecture: 7:00-8:30 p.m.

**Saturday, November 17, 2012**

Lecture: 9:00 a.m.-12:00 p.m.

Dinner, Friday and Saturday Lectures, \$25

Dinner and Friday Lecture ONLY \$15

Friday Lecture ONLY \$10

Saturday Lecture ONLY \$10

Students: Friday and Saturday Lectures  
ONLY, no dinner \$5

**Reservations are required by November 12.**

**Childcare available upon request  
by November 12.**

*The Reverend Dr. Benjamin King will be  
our guest preacher on*

**Sunday, November 18, 2012**

7:00 a.m., 8:30 a.m., and 11:00 a.m. Liturgies  
Sunday Forum at 9:45-10:45 a.m.

Go to our website [christcathedral.org](http://christcathedral.org) for more information.

Please contact Becky Rochford,  
[brochford@christcathedral.org](mailto:brochford@christcathedral.org) if you have any questions.

## THE TENTH ANNUAL CHRIST CHURCH CATHEDRAL WOMEN'S RETREAT Rescuing Ourselves: Navigating Compassion Fatigue

Join us for fellowship, prayer and fun at our 10<sup>th</sup> Annual Christ Church Cathedral Women's Retreat at Montgomery Bell State Park, January 25-27, 2013. The guest speaker will be Kate Payne, JD, RN the CEO for University Community Health Services (UCHS), a nurse-managed primary care practice. For 17 years prior to that, she was Director of Ethics and Palliative Care at Saint Thomas Hospital in Nashville. In her work Kate draws on more than 30 years of professional practice and education in nursing, law and ethics. She brings a broad range of experiences to her role, including caregiver, educator, consultant, manager and leader. Kate is a frequent lecturer and workshop leader on health care ethics and palliative care topics both locally and nationally.

Registration is open and the space is limited, so please sign up ASAP! Sign up online at [eventbrite.com/event/4641302260#](http://eventbrite.com/event/4641302260#) or at church on Sunday in the Wheeler Room before the church school hour (in the coffee and donut area).

# PARISH LIFE

## EVERY MEMBER CANVASS 2013 "BY WORD AND EXAMPLE"

"Will you proclaim by word and example the Good News of God in Christ?" If you were present at the beautiful Liturgies on the Sunday after All Saints' Day, at which several baptisms took place, you joined in the communal response to this question. As this year's Every Member Canvass continues, we ask you to join in the communal response to the call to participate "by word and example" in sacrificial giving to Christ Church Cathedral for the year 2013.



The discipline of sacrificial Christian giving provides for the love of God to take root in the life of the baptized and is the outward and visible sign of every thanksgiving offered to God. To date, 220 Cathedral households have responded to the call to honor God by giving of their first fruits. Of these, 71 represent increased pledges and 14 are from those who have not previously pledged. The total amount pledged so far in the Canvass is just under \$800,000.

Please join those who are participating "by word and example" in the 2013 Every Member Canvass. To make your pledge online, go to [christcathedral.org/give](http://christcathedral.org/give). You may also send the Commitment Card you received in the mail (they are in the pew racks, too) to the Cathedral Office or print the card at [christcathedral.org/give/resources](http://christcathedral.org/give/resources).

Let your love of God and Christ Church Cathedral be reflected in your contribution to the 2013 Every Member Canvass. This is the next most important act of discipleship after receiving communion. No offering is too small, and we hope all parishioners and friends will participate. Walk in solidarity with your brothers and sisters in Christ by supporting the mission of Christ Church Cathedral.

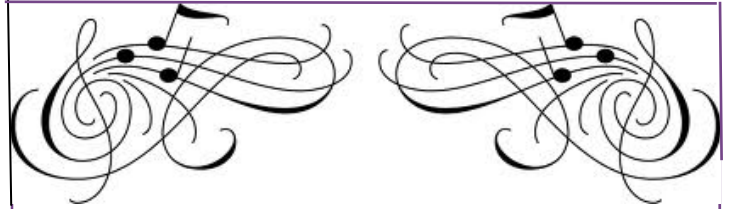
To make your 2013 pledge online go to  
[christcathedral.org/give](http://christcathedral.org/give)



## Baptism

Sunday, January 13, 2013

The next opportunity for baptism will be Sunday, January 13, at the 8:30 a.m. and 11 a.m. liturgies. If you or your child would like to be baptized, please contact the Reverend Canon Gene Manning at 615.255.7729 or [gmanning@christcathedral.org](mailto:gmanning@christcathedral.org).



Please join us for a  
Thank-You Tea and Recital  
honoring  
Sallee Wise  
for her gracious donation of  
a Kawai grand piano  
to Christ Church Cathedral



Tuesday, November 13  
5:00 p.m.–6:00 p.m.

Parish Hall

## Evening Prayer Accompanied by Music of the Taizé Community

November 11, 2012

6:00 p.m.

*A quiet, meditative and  
reflective style of worship, using  
music, simple chanting, periods of  
silence, and brief readings. A  
special way to worship God and  
to quiet the soul.*

There will be no Taizé in December.



**Caution:** Children should be accompanied by an adult when crossing from church to the Cathedral Annex Bldg. for safety. Please do not let younger children cross unattended.



## THE ADVENT EVENT Sunday, November 25 9:45-10:45 a.m.

Begin preparations for Christmas with this intergenerational event on the first Sunday in Advent, November 25. Parents are invited to participate with their children in making Advent crafts and wreaths and enjoying refreshments. There will be no regular classes for children or youth that day. There will be a charge for materials for the Advent Wreaths.

**Volunteers are needed** to help with crafts and to bake cookies. Please contact Becky Rochford at 615-255-7729, [brochford@christcathedral.org](mailto:brochford@christcathedral.org) if you would like to share your time and talents.



## Christmas Pageant and Community Supper Sunday, December 9, 5:00 p.m.



Calling all Wise men, little earlier.  
shepherds, angels,  
barnyard animals  
and musicians! We  
need you for the  
Christ Church

Cathedral Christmas Pageant. Children, youth and adults of all ages are invited to attend this sweet and impromptu production that celebrates the birth of Jesus.

**Costumes:** Children are asked to come to the Cathedral dressed in a simple costume of their choosing as a wise man, an angel, a shepherd or a barnyard animal. Eighth graders will play the principal roles, and they will lead the younger children during the performance. A limited number of costumes will be available if you cannot make one. Participants need to be dressed and in their designated area by 4:45 p.m. If you need help with your costume or need "accessories," come to the Parish Hall a

**Musicians:** If you are interested in playing an instrument or singing during the performance, please contact music coordinator, Shelton Clark 615.661.8238 or [sheltonclark@comcast.net](mailto:sheltonclark@comcast.net). All musicians are welcome.

### Lead Actors and Assistant Directors:

Eighth grade lead actors and youth assistant directors need to attend a short rehearsal at 9:45 a.m. in the Nave on the Sunday morning of the pageant. You will be fitted for costumes at that time. You will need to be at church by 4:15 p.m. sharp on the pageant night to get dressed and to do a final walk through. Also, if you plan to stay for dinner, you need to make a reservation.



**Supper:** Reservations for the Community Supper must be made by **Monday, December 3, Reservations need to be prepaid.**

The cost for the supper is \$5 per person. Children ages three and under eat free. Reservation forms are available online at [christcathedral.org](http://christcathedral.org) or on the pew rack in the reception area of the church.

**For further information, please contact Becky Rochford at [brochford@christcathedral.org](mailto:brochford@christcathedral.org).**



# CATHEDRAL MINISTRIES

## SIXTH ANNUAL CIVIL WAR PEACE PILGRIMAGE DECEMBER 1, 2012



On November 30, 1864, 9,500 soldiers (7,000 of whom were Confederate troops) died within five hours in Franklin, Tennessee, in one of the most significant battles of the U.S. Civil War. The Battle of Franklin, followed by the Battle of Nashville on December 15, marked a turning point in the war. For the last five years, an

annual peace pilgrimage has sought to remember those who died by visiting the site of Carnton Plantation, where many soldiers and generals were laid to rest.

This year, the pilgrimage will take place on Saturday, December 1. Pilgrims will leave the Christ Church Cathedral parking lot at 9:30 a.m. and will arrive at Carnton by 10 a.m. Participants can drive their own car or carpool with others. Following the visit to Carnton, the group will lunch together at McCreary's Pub at 414 Main Street, Franklin. After lunch, there will be a brief service of prayer and remembrance using the Book of Common Prayer, poetry, and silence at St. Paul's Episcopal Church at 510 West Main St. The group will leave Franklin by 1 p.m., and arrive back at the Cathedral by 1:30 p.m.

Jane Boram, chair of Cathedral Ministries for Reconciliation, hopes this short pilgrimage will allow more to experience "the living and the dead to glimpse who we are and who we might become," as Harvard theologian Stephanie Paulsell teaches. She explains, "Every pilgrimage bids us to reveal ourselves." Arthur Paul Boers, Mennonite seminary professor says, "It is true ... that we are all on a journey of some sort ... pilgrimage is faith-motivated travel to experience God in ways that can shape and change us; it focuses on ... growth in discipleship ... a break in everyday life and realities."

The cost of admission to the Carnton Plantation is \$15 for adults, \$12 for seniors (65 and older), and \$8 for children 6-12 yrs. For more information or to reserve your place for this year's Pilgrimage, please contact Jane at 615.500.2446, or bobjaneboram@clearwire.net. Scholarships to cover the day's cost are available.



**SUNDAY, DECEMBER 2**  
9:30 AM-1:00 PM

**Give A Gift of Love**  
**Participate in the Alternative Christmas Gift Market**  
**Make a donation to a local or global charity**  
**In honor of family and friends.**

How often have you spent money on Christmas presents out of obligation? How many times have you received a gift out of that same obligation? Think of what a difference we can make if we channel a portion of the \$450 billion spent each year on unwanted Christmas presents to someone who needs basic things like food, clothing and shelter.

When Jesus loved, He loved in ways never imagined. He loved the poor, the forgotten, the overlooked and the sick. Join Him in giving resources to those who need help the most..

**Make this Christmas more meaningful. Consider an "alternative gift" and participate in this year's Alternative Christmas Gift Market.**

**Order on-line November 19 through December 14 at [christcathedral.org](http://christcathedral.org) or come to the Market on Sunday, December 2, 9:30 a.m.-1 p.m. in the Parish Hall. \*Checks will be accepted and Gift Cards distributed on December 9.**

NOTE: WE WILL ACCEPT DEBIT AND CREDIT CARDS THIS YEAR.

Please contact Holly McCathren 615.665.9235, [hmccathren@gmail.com](mailto:hmccathren@gmail.com) or Libby Patterson 615-948-6431, [libpatterson@comcast.net](mailto:libpatterson@comcast.net) for more information.

**Love All, Give More, Worship Fully.**



**JOIN US FOR THE SIXTH ANNUAL CIVIL WAR PEACE PILGRIMAGE ON DECEMBER 1.**

# YOUTH HAPPENINGS

## Baptism Reflections

*This month Shelton Clark, Sr. continues our series of reflections on the meaning of youth ministry at Christ Church Cathedral.*

What memories do you have about your child's baptism? If you're like me, you mostly remember people and details: grandparents, godparents, friends, weather.

I remember standing at the communion rail at the front of the church with my wife Catherine and each of our three sons for each of their baptisms. I remember joining in prayers for the newly baptized. But as my own recall of the details of those particular services fade into the rear-view mirror of my memory, a part of me is always genuinely surprised each time I hear the words again at Christ Church's regular baptismal liturgies:

*Deliver them, O Lord, from the way of sin and death.*

*Open their hearts to your grace and truth.*

*Fill them with your holy and life-giving Spirit.*

*Keep them in the faith and communion of your Holy Church.*

*Teach them to love others in the power of the Spirit.*

*Send them into the world in witness to*

*your love.*

*Bring them to the fullness of your peace and glory.*

Of course we prayed those words when our children were infants, but how much more do they mean today, as they grow into their teen years? A fair question to ask is, how do we help them to live into those words? Catherine and I were blessed to have grown up in churches (Episcopal and Presbyterian) with active youth programs. And we believe that those experiences helped shape us not only as Christians but as parents. We have also found tangible examples of how this community helps our children live into the words spoken at their baptisms.

I am humbled at the opportunities my children have had to grow up in faith as members of the Cathedral. They have had role models in caring adults from past and present clergy and staff, not to mention the many fellow-traveler parents whose children I have watched grow up alongside my own.

We are especially grateful to those who have devoted themselves to youth ministry in an era in which not only youth but parents are busier and more distracted than ever. There are opportunities for ministry that my children have had

through the Christ Church youth program that might not even have existed during my days as a youth.

Most importantly, we are blessed with wonderful young people in this church. Most parishioners are aware that many of our older youth have taken mission trips to Amistad in Bolivia. And many youth are visible as acolytes or choristers in our weekly worship. What you might not know is how many times youth from this parish have reached out in the name of Christ by feeding the homeless at the Church in the Yard at Holy Trinity Episcopal Church or serving dinner at Matthew 25, or how summer urban missions have put them to work at St. Luke's Community House and East Nashville Hope Exchange. Just a few weeks ago Cathedral youth hosted their fellow youth from around the Diocese of Tennessee, as well as our Bishop, the Rt. Reverend John Bauerschmidt, for a Eucharist service and dinner.

Thanks be to God for the youth of this parish.

*Grant, O Lord, that all who are baptized into the death of Jesus Christ your Son may live in the power of his resurrection and look for him to come again in glory; who lives and reigns now and forever. Amen.*

## NOVEMBER YOUTH CALENDAR

November 4	Church in The Yard, Holy Trinity Episcopal Church, 2-3:30 p.m.
November 10	Lambcroft, Connection Pointe Church, 5-8 p.m.
November 15	Room in the Inn, Cathedral Annex Building, 6-7 p.m.
November 18	Family Dinner, Cheek Hall, 4-7 p.m.
November 30	EYC High School Lock-in, Youth Room, 5 p.m.



MATTHEW 25





# SACRED SPACE FOR THE CITY ARTS SERIES

## Organ Virtuoso Nathan Laube to Perform November 9 at 7:30 p.m.



The second event in the Sacred Space for the City Arts Series features concert organist Nathan Laube playing a varied program of 17<sup>th</sup>-20<sup>th</sup> century compositions on the Cathedral's Lively-Fulcher organ.

Among the seven pieces on the program are the Allegro vivace from the Symphonie pour Grand Orgue, Op. 42, No. 5 by Charles-Marie Widor; Passacaglia, BuxWV 161 by Dietrich Buxtehude; and Fantasy for Mechanical Organ in f, K. 594 by Wolfgang Amadeus Mozart.

A star among young classical musicians, Laube has thrilled audiences in Europe and the United States with his brilliant

playing and creative programming. In addition to performing an extensive repertoire spanning the works of pre-Baroque to living composers, he has become known for his colorful and virtuoso transcriptions of orchestral works by Liszt, Mendelssohn, Mahler, Rossini, and Strauss.

Laube was the featured performer at the 2009, 2011, and 2012 national conventions of the Organ Historical Society and was also featured at the 2010 national convention of the American Guild of Organists in Washington, D.C. Last summer, he performed with the Nashville Symphony during the AGO's national convention in Nashville.

A native of Chicago, Laube studied at the Chicago Academy of the Arts and went on to earn a Bachelor of Music degree at the renowned Curtis Institute of Music in Philadelphia. At graduation, he received the Institute's two highest awards, the Landis Award for Excellence in Academics and the Aldwell Award for Excellence in

Musical Studies. He has since won top prizes at several prestigious competitions, most recently the Scholarship of the President of Germany at the 2012 Felix Mendelssohn Preis in Berlin, which included a performance in the Berlin Konzerthaus.

Laube is presently artist-in-residence at the American Cathedral of the Holy Trinity in Paris, France. He is concurrently pursuing graduate studies at the Musikhochschule in Stuttgart, Germany, where he was awarded a prestigious German DAAD Fellowship Study Scholarship. During the 2010-2011 academic year, he was a Fulbright scholar at the conservatory in Toulouse, France, where he earned top honors, as well as a special prize from the city of Toulouse.

Tickets for the performance are \$15 for adults and \$5 for students. Tickets may be purchased on the Cathedral's website at [christcathedral.org/SacredSpace/ticketsales](http://christcathedral.org/SacredSpace/ticketsales) or at the door.



Christ Church Cathedral  
Sacred Space for the  
City Arts Series

Upcoming Events  
**DECEMBER**

### **NASHVILLE UNLIMITED**

Annual benefit concert for Room In The Inn

**December 11, 2012**

*Suggested donation: \$20*

### **MARK CABUS: A CHRISTMAS CAROL**

**December 13 and 14, 2012**

*Adults \$15, Students \$5*

## The Annual Candlelight Festival of Lessons and Carols

**Sunday, December 16  
4:00 p.m.**

Sung by the

**Cathedral Choir and Senior Choristers**

Directed by

Canon Dr. Michael Velting, Choirmaster and Organist  
Jon Johnson, Associate Choirmaster and Organist

### **Have You Updated Your Information?**

**Do you have a new mailing address,  
phone number, or e-mail address?**

**Contact Peggy Tucker  
at 615.255.7729, [ptucker@christcathedral.org](mailto:ptucker@christcathedral.org).**

## **Combined *Cornerstone* December/January**

The next *Cornerstone* will be a combined issue.  
The deadline for submissions is Friday, November 9.

# ANNOUNCEMENTS

## WEATHER ADVISORIES

When inclement weather strikes, please check the Cathedral website, [christcathedral.org](http://christcathedral.org), for current notices about schedules at the Cathedral.

## CATHEDRAL FOYER GROUPS ARE FORMING



Small groups are vital to the life of a congregation as large and diverse as Christ Church Cathedral. Foyer groups provide an opportunity for parishioners to get to know each other and learn about parish life by gathering to talk and share a meal in friendship. Made up of 8 to 10 members of the Cathedral who have expressed an interest in getting to know their fellow parishioners better, the groups meet casually once a month, November through May. The format and time of the meetings are determined by each group. Fellowship in the Cathedral is strengthened by the ties we form among ourselves. Foyer groups bring together a cross-section of parishioners that includes old, young, single, married, new members, and long-time members of our community. By getting to know people within our Cathedral family better, our lives together in Christ are enriched. The first foyer groups have been formed! But if you hurry, you can still get involved. Just fill out the form on the Cathedral website at [christcathedral.org/InOurChurch/FoyerGroups](http://christcathedral.org/InOurChurch/FoyerGroups). You will be assigned to a group and will receive a list of all group members and the group leader. The group leader will then contact you. For more information, please contact Rees Mitchell at [rees.mitchell@comcast.net](mailto:rees.mitchell@comcast.net)

## The Cathedral Offices will be closed November 22 and November 23.

The Clergy and Staff of  
Christ Church Cathedral wish you and  
your family a blessed Thanksgiving holiday.



### Cathedral Webcast at [christcathedral.org/webcast](http://christcathedral.org/webcast):

The Christ Church Cathedral webcast is **live** each Sunday morning at 10:45 a.m. for the Holy Eucharist and at other times for special events. When the webcast is not live, it replays the most recent event. There is also an "Archive" section on the Cathedral website that includes a library of past webcast events.

**Daughters of the King:** Daughters of the King will meet on November 11 (second Sunday of the month) at 8 a.m. on the second floor in Becky Rochford's office.

**Cathedral Men's Breakfast:** The Men's Breakfast will be held on November 20, at 7 a.m. Cost is \$5. Please RSVP by calling Marti Lawson, 615.255.7729, or online at [christcathedral.org](http://christcathedral.org). **The deadline is Sunday, November 18.**

**Bones for Life:** The Bones for Life program led by Katherine Correa will continue on Thursdays, 11 a.m.-12 p.m., in the Cathedral Annex. The first class is free, additional classes are \$10 per session for regular attendees. Mats are provided, and participants should wear comfortable clothing. For more information, go to [nashvillemindandbody.com](http://nashvillemindandbody.com) or contact Becky Rochford, [brochford@christcathedral](mailto:brochford@christcathedral).



## MS. CHEAP PENNY DRIVE FOR SECOND HARVEST FOOD BANK

Cathedral parishioner Mary Hance, aka Ms. Cheap of the *Tennessean*, invites all of you to join her Ms. Cheap Penny Drive for Second Harvest. There are lots of ways to get involved – you can bring your change to church and put it in the big Penny Drive jar at the reception desk, make a penny drive can or jar to have at home to put your change in each night, throw a holiday party and ask guests to bring money for the cause, put a can in your break room at work to make it a work outreach project, or make it a family project that opens the door to conversation about hunger and need in our community. No matter how you get involved, every penny really does count. There are Penny Drive jars at all Avenue Bank branches and at Second Harvest, so you can pick them up there and then return them there when you are finished. Please join this effort. It can make such a difference to those who give and those who receive. This is the fourth annual Ms. Cheap Penny Drive. So far the drive has raised over \$62,000 for Second Harvest. Details on the drive can be found at [secondharvestmidtn.org](http://secondharvestmidtn.org)



**Christmas Flowers:** If you would like to give a gift for flowers in the Chancel at Christmas in memory of or in thanksgiving for family or friends, please send a check to the Cathedral in an envelope marked Christmas Flowers, c/o Peggy Tucker. If you have questions,

contact Peggy at [ptucker@christcathedral.org](mailto:ptucker@christcathedral.org) or 615.255.7729. **The deadline for inclusion in the Christmas Order of Worship is noon on Monday, December 3.**

**Christmas Music:** If you would like to give a gift for music to celebrate Christmas, in memory of or in thanksgiving for family or friends, please send a check to the Cathedral in an envelope marked Christmas Music, c/o Michael Velting. If you have questions, contact Michael at

[mvelting@christcathedral.org](mailto:mvelting@christcathedral.org) or Jon Johnson at [jjohnson@christcathedral.org](mailto:jjohnson@christcathedral.org) or 615.255.7729. **The deadline for inclusion in the All Saints' Order of Worship is noon on Monday, December 3.**



## VOLUNTEER OPPORTUNITIES AT ST. LUKE'S

### SENIOR FRIENDS

Volunteers are needed for *any or all Thursdays, 9 a.m.-1 p.m.* The volunteer would assist our seniors in activities. Specifically, volunteers will help senior's complete art and crafts projects and assist with Bingo.

### MOBILE MEALS

Deliver meals and offer companionship to homebound elderly. We need volunteer drivers on **Wednesdays and Fridays between 10:30 a.m.-2 p.m.** Also, we could utilize volunteers who can be available on short-notice to substitute on days when a regularly-scheduled volunteer cannot make it. If you work during the day, this could be a great way to spend your lunch hour while doing direct service to give back to the community. Lunch included!

For more information please contact Christie at 615.324.8375, or [christie.bearden@stlukescommunityhouse.org](mailto:christie.bearden@stlukescommunityhouse.org).

# Thanksgiving Eve

The Parish is invited to a  
**Thanksgiving Eve Worship Service**  
with the Leadership and People of  
**First Evangelical Lutheran Church**



**November 21, 2012**

**7:00 p.m.**

**First Evangelical Lutheran Church**  
**113 8th Avenue South**

**A reception will follow the service.**

## Christ Church Cathedral PILGRIMAGE TO TURKEY March 1-10, 2013



This coming spring, join fellow parishioners of Christ Church Cathedral on pilgrimage to early Christian sites in Turkey. Home to many of the first Christian communities to whom New Testament epistles were written, Turkey affords a glimpse into the places, centuries, and people that generated some of the most significant and formative developments of the Christian faith. **The application deadline has been extended to Wednesday, November 14, (application forms plus \$500 deposit, applicable towards the program fee). The overall program fee is \$4,050, which includes, airfare, housing, meals, etc.** The pilgrimage will be led by the Reverend Joshua M. Caler and Dr. Daniel Shafer, Professor of History at Belmont University and a member of the Cathedral Vestry. Please contact the Reverend Joshua M. Caler at [jcaler@christcathedral.org](mailto:jcaler@christcathedral.org) or Dr. Dan Schafer at [daniel.schafer@belmont.edu](mailto:daniel.schafer@belmont.edu) for more information.

## Centering Prayer Retreats at St. Mary's Sewanee

[stmaryssewanee.org](http://stmaryssewanee.org) or [centeringprayermidtn.com/](http://centeringprayermidtn.com/).

## Cathedral Staff

The Very Reverend Timothy E. Kimbrough, *Dean and Rector*  
The Reverend Canon Gene B. Manning, *Sub Dean*  
The Reverend Joshua M. Caler, *Curate*  
The Reverend Dolores Nicholson, *Deacon*  
Canon Dr. Michael Velting, *Organist and Choirmaster*  
Jon Johnson, *Associate Organist and Choirmaster*  
Canon Dr. Stanley Hauerwas, *Canon Theologian*  
Becky Rochford, *Christian Education Coordinator*  
Dianne Green, *Director of Communications*  
Chris Klopp, *Youth Pastor*  
Isaac Reeser, *Youth Ministry Assistant*  
Mary Gail Compton, *Youth Volunteer Coordinator*  
Larry Smith, *Accountant*  
Mark McQueen, *Business/Facilities Manager*  
Peggy Tucker, *Executive Assistant*  
Amy Greenman, *Events Coordinator*  
Anzora Lee-Starks, *Publications Coordinator*  
Marti Lawson, *Receptionist*  
Elmarie Brice, *Assistant Receptionist*  
Verna Fausey, *Assistant Receptionist*  
Frank Connor, *Building Maintenance*  
Elliott Brown, *Building Maintenance*  
Will Fulcher, *Senior Sexton*  
James Williams, *Sexton*  
Marcus Frazier, *Sexton*  
Claudia Adair, *Childcare Coordinator*  
Robert Crittenden, *Reception Manager*  
Peter Fyfe, *Organist and Choirmaster Emeritus*


## Contact Us

If you want to include an article in the *Cornerstone*, which is published monthly, and *Happenings*, which is published weekly, please contact us at 615.255.7729. Send your material to **Anzora Lee-Starks** via e-mail, [astarks@christcathedral.org](mailto:astarks@christcathedral.org); **Peggy Tucker**, [ptucker@christcathedral.org](mailto:ptucker@christcathedral.org); **Dianne Green**, [dgreen@christcathedral.org](mailto:dgreen@christcathedral.org) or by Communications Request Form at [christcathedral.org/whatsup](http://christcathedral.org/whatsup). You may also bring your article to the church office or fax it to 615.313.7090. **Deadline for the December/January issue is noon on Friday, November 9.**



Christ Church Cathedral  
900 Broadway  
Nashville, TN 37203

## NOVEMBER 2012 CALENDAR

SUNDAY	MONDAY	TUESDAY	WEDNESDAY	THURSDAY	FRIDAY	SATURDAY
<h3>Cathedral Tours</h3> <p>Available on Saturdays 10:30 a.m.-12 p.m., Sundays after the 8:30 a.m. and 11 a.m. Liturgies and to groups by appointment.</p>				<b>1</b> Bones Workshop, 11 a.m.-12 p.m. Centering Prayer, 12:15 p.m. Room in the Inn, 5 p.m. Cathedral Choir Rehearsal, 7 p.m.	<b>2</b> First Friday Rehearsal, 3 p.m. First Friday Liturgy, 6 p.m. Reception, 7 p.m.	<b>3</b> Baptism Rehearsal, 9 a.m. Episcopal Churchmen of TN Board Meeting, 11 a.m. Evensong Rehearsal, 12:30 p.m. Visitation, 2 p.m. Funeral, 3 p.m. No Cathedral Tours, <i>Stephen Minister Retreat</i>
<b>4</b> <i>Sunday after All Saints' Day</i> Baptism <i>Proper 26</i> Daylight Saving Time Ends, 2 p.m. Breakfast, 7:30-8:30 a.m. Christian Education 9:45-10:45 a.m. Centering Prayer, 9:45-10:45 a.m. Church in the Yard ( <i>off-site</i> ), 2 p.m. Pre-Evensong Organ Concert, 3:30 p.m. Evensong, 4 p.m. Reception, 5 p.m.	<b>5</b> Foyer Group Meeting, 11:45 a.m. Junior Choristers, 4:15 p.m.	<b>6</b> CGS LI Training, 9 a.m.-2 p.m. Companions in Christ, 11 a.m. Staff Meeting, 2 p.m. Centering Prayer, 5:30 p.m.	<b>7</b> EFM, 8:30 a.m. Bible Challenge, 11 a.m. EFM, 11:30 a.m. Cathedral Chapter Meeting, 12 p.m. Wed. Evening Dinner, 5:30-6:30 p.m. Wed. Evening Program, 6-7:30 p.m. Journey in Faith, 6 p.m.	<b>8</b> Bones Workshop, 11 am-12 p.m. Centering Prayer, 12:15 p.m. Room in the Inn, 5 p.m. Cathedral Choir Rehearsal, 7 p.m. Theology on Tap ( <i>off-site</i> ), 7 p.m.	<b>9</b> Nathan Laube Organ Concert, 7:30 p.m. Reception, 9 p.m.	<b>10</b> Cathedral Tours, 10:30 a.m.-12 p.m. Lambscroft ( <i>off-site</i> ), 5 p.m.
<b>11</b> <i>Proper 27</i> Breakfast, 7:30-8:30 a.m. Daughters of the King, 8 a.m. Christian Education 9:45-10:45 a.m. Centering Prayer, 9:45-10:45 a.m. Taizé, 6 p.m.	<b>12</b> Junior Choristers, 4:15 p.m. Youth Advisory Council, 5 p.m.	<b>13</b> CGS LI Training, 9 a.m.-2 p.m. Companions in Christ, 11 a.m. Staff Meeting, 1 p.m. Liturgy Committee Meeting, 3 p.m. Thank You Reception and Recital, 5 p.m. Centering Prayer, 5:30 p.m. EFM, 6:30 p.m.	<b>14</b> EFM, 8:30 a.m. Bible Challenge, 11 a.m. EFM, 11:30 a.m. Senior Choristers, 4:30 p.m. Journey in Faith, 6 p.m.	<b>15</b> Bones Workshop, 11 a.m.-12 p.m. Centering Prayer, 12:15 p.m. Room in the Inn, 5 p.m. Cathedral Choir Rehearsal, 7 p.m.	<b>16</b> <i>Fall Symposium:</i> Reception, 5:30-6 p.m. Dinner, 6-7 p.m. Dr. Ben King Lecture, 7-8:30 p.m.	<b>17</b> <i>Fall Symposium:</i> Dr. Ben King Lecture, 9 a.m.-12 p.m. Cathedral Tours, 10:30 a.m.-12 p.m.
<b>18</b> <i>Proper 28</i> Breakfast, 7:30-8:30 a.m. Christian Education 9:45-10:45 a.m. Centering Prayer, 9:45-10:45 a.m. Youth Family Dinner, 4 p.m.	<b>19</b> No Junior Choristers	<b>20</b> Cathedral Men's Breakfast, 7 a.m. Companions in Christ, 11 a.m. Staff Meeting, 2 p.m. Centering Prayer, 5:30 p.m. No EFM	<b>21</b> No EFM, Bible Challenge No EFM, No Senior Choristers No Journey in Faith Thanksgiving Service ( <i>off-site</i> ), 7 p.m.	<b>22</b> <i>Cathedral Offices Closed</i> <i>Thanksgiving Holiday</i> Room in the Inn, 5 p.m. 	<b>23</b> <i>Cathedral Offices Closed</i> <i>Thanksgiving Holiday</i>	<b>24</b> No Cathedral Tours, Visitation, 10-11 a.m. Funeral, 11 a.m.
<b>25</b> <i>Christ the King</i> <i>Proper 29</i> Breakfast, 7:30-8:30 a.m. Christian Education 9:45-10:45 a.m. Centering Prayer, 9:45-10:45 a.m. Advent Event, 9:45-10:45 a.m.	<b>26</b> Junior Choristers, 4:15 p.m. Vestry Evening, 5:15 p.m.	<b>27</b> No CGS LI Training Companions in Christ, 11 a.m. Staff Meeting, 2 p.m. Centering Prayer, 5:30 p.m. EFM, 6:30 p.m.	<b>28</b> EFM, 8:30 a.m. Bible Challenge, 11 a.m. EFM, 11:30 a.m. Senior Choristers, 4:30 p.m. Wed. Evening Dinner, 5:30-6:30 p.m. Stephen Ministers, 5:30 p.m. Wed. Evening Program, 6-7:30 p.m. Journey in Faith, 6 p.m.	<b>29</b> Bones Workshop, 11 a.m.-12 p.m. Centering Prayer, 12:15 p.m. Centering Prayer Facilitators Meeting, 1:15 p.m. Room in the Inn, 5 p.m. Cathedral Choir Rehearsal, 7 p.m.	<b>30</b> Youth Lock In, 5 p.m.	