

Announcements



Wednesday Evenings at the Cathedral

PASTORAL CONVERSATIONS

6:00-7:30 p.m.

Please join these important conversations as we seek to have the faith inform some of the most difficult aspects of our lives and the lives of our loved ones.

January 16

Cynthia Ezell, Marriage and Family Therapist

“Mistakes as Fertile Ground—The Four Gifts of Fallibility”

January 30

Dr. Ben Curtis, School of Religion, Belmont University; the Reverend Lyonel Gilmer, St. Thomas/Nashville Clinical Pastoral Partnership; and Martin Shofner, Partner, ArchitectSure

“Words of Faith for Spiritual Dialogue”

Dinner will be served at 5:15 p.m. Suggested cost of the dinner is \$5 for adults and \$3 for children. Childcare is provided. Please call Marti Lawson at 615.255.7729 for dinner reservations.

**Dinner reservations are required by 4 p.m. on
Monday each week.**

THE BIBLE CHALLENGE

This morning, 9:45-10:45 a.m., and Wednesday, January 9, 11 a.m.-12 p.m., we will have gatherings to give us an opportunity to reflect and discuss the readings. These gatherings are not required but are offered simply to enhance and support our experience together.

Readings for week 15, beginning January 7

Day 99 I Samuel 7-9, Psalm 82, John 17

Day 100 I Samuel 10-12, Psalm 83, John 18

Day 101 I Samuel 13-15, Psalm 84, John 19

Day 102 I Samuel 16-18, Psalm 85, John 20

Day 103 I Samuel 19-21, Psalm 86, John 21

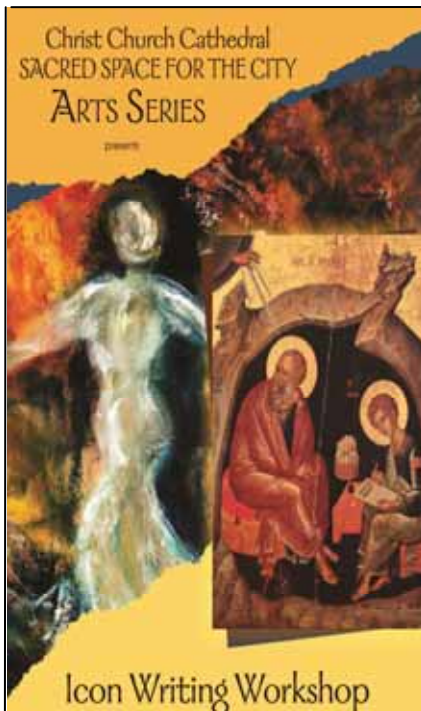
Day 104 I Samuel 22-24, Psalm 87, Acts 1

Day 105 Enjoy hearing the Scriptures read aloud in church

LENTEN REFLECTIONS 2013

This Lent we will publish a booklet of daily reflections written by Christ Church parishioners. We are looking for personal reflections from parishioners of all ages. We particularly welcome meditations that are tied to the Lenten daily readings. These 200 – 400 word meditations will offer insight into scripture through the lens of the writer's experience. **Deadline for writings is Wednesday, January 30.** If you are interested in writing for this project, please contact Becky Rochford, brochford@christcathedral.org, for more details.

To make your 2013 pledge
online go to
christcathedral.org/give



Mon.-Fri., Feb. 18-22 • 8:30 a.m.-4:30 p.m.
Christ Church Cathedral

Experience the spiritual discipline of painting an icon in a small class setting.

\$495 includes materials and lunch
Registration fee of \$100 is due by
Jan. 14, full payment by Feb. 1.

Only 2 places remain—register now!

christcathedral.org/sacredspace/ticketsales
or 615.255.7729.